



HYDE

[WWW.HYDEYACHTS.COM](http://WWW.HYDEYACHTS.COM)



## TUGELA

LOA	24.10 m	79.07 ft	Displacement	51000 kg	112400 lbs
LWL	18.38 m	60.29 ft	Ballast	18000 kg	39700 lbs
Beam	6.00 m	19.59 ft			
Draft	3.4 m	11.2 ft			
Year of build 2003 and Flag British					

Range under power 1700 nm or 215 h at 7.8 knots, top speed 10.2 knots.

### PRICE:

Euros 2,200,000 excluding VAT

### COMMENTS:

Tugela is MCA compliant, shows extremely well and has been continually maintained and upgraded. Easily capable of transatlantic passages and extended cruising, Tugela boasts massive internal volume and is in truly turnkey condition.

### RECENT UPGRADES BY THE CURRENT OWNER INCLUDE THE FOLLOWING;

- Recent flag blue hull paint
- Rudder serviced 2010.
- Hull windows replaced in 2008
- New anchor windlass 2011
- Nautor flush deck hatches
- Leather saloon upholstery 2008

- Reconfigured owners aft cabin to provide centre-line double bed 2010
- Updated air conditioning system 2010
- Cummins Onan generator replacing original 2008
- "Living Control" touch pads in each cabin for audio video link to central hard drive "Kaleidescape" hardware entertainment system 2012
- Updated electronics package 2009
- Carbon mast new in 2012 with standing rigging replaced
- Bow thruster fitted 2008
- New paint (2008)
- Tender and outboard (2008)

## HULL

### FINISH

- Painted Flag Blue topsides
- Boot top in white and with Blue cove stripe
- Name on transom, "Tugela"
- Hull windows port and starboard side saloon



## KEEL

- Standard bulb keel
- Rudder and steering system
- Steering wheel with double spokes
- Spade rudder with roller bearings

## TRANSOM

- Hydraulically operated built-in bathing platform in transom, with swimming ladder
- Extended transom including two deck hatches on aft deck

## HULL WINDOWS

- Hull windows, Perspex, in saloon, both sides, flush with frame and hull on outside and Roman blinds replaced 2008

## DECK

### TEAK WOODWORK

- Teak on side decks, coach roof and bridge deck and cockpits, originally 11 mm thick, instead of standard 9 mm
- Teak on both sides of main entrance, including stowage hatches.
- Modified cockpit seat inner edges (teak)
- Winches, power pack, windlass

## LEWMAR COMMANDER 5, 9 FUNCTIONS:

- Primary winches, 2
- Runners/Secondary winches, 2
- Main sheet winch, 1
- Halyard winches, 2
- Anchor windlass, 1
- Hydraulic forestay, 1
- Runners/secondary 2 x Lewmar 77 SHST, hydraulic, instead of standard 2 x L 77/3 SST
- Main sheet 1 x Lewmar 77/3 SHST, hydraulic, instead of standard 1 x L 66 CST
- Additional main sheet traveller winch 2 x Lewmar 48 CST
- Primary winches, 2 x Lewmar 111/3 SHST, hydraulic, instead of standard Lewmar 88/3

## WINCHES ON SB SIDE AFT OF MAST ON DECK:

- Main/genoa halyard/foreguy  
1 x Lewmar 66/3 CHST, hydraulic
- Spinnaker/halyard, 1 x Lewmar 66 CST

## WINCHES ON PORT SIDE AFT OF MAST:

- Reef/genoa halyard 1 x Lewmar 66 CHST
- Spinnaker halyard/outboard pole lift/stay sail
- Halyard, 1 x L 66 CST



Anchor windlass, Lewmar VC6 new 2011 hydraulic CO12MM, installed recessed on deck, chain lead under deck

## STEMHEAD FITTING

Stemhead fitting with double rollers, with a chain-locating roller and aluminium bow sprit with tack fitting for the spinnaker

## FITTINGS FOR RUNNING RIGGING

- Fixed deck fittings for spinnaker and jockey pole
- Harken stainless recessed genoa sheet tracks
- Screw-in fittings at station 4 and 5,3 for additional sheeting options
- Foot block at forward end of genoa tracks for car adjustment (Harken 508)
- Bow sprit, aluminium white painted, on second anchor roller with Harken block for MPS
- Genoa car adjustment
- Foreguy line to run under deck to SB aft winch at mast

## OTHER FITTINGS

- 70" recessed steering wheel, two cockpits
- Roller fairleads on the stern, closed top, one pair
- Flush mounted stanchion bases
- Flush mounted ventilation louver in aft coaming
- Vang quick release and Lewmar emergency stop underneath binnacle

- Stainless steel foot support in aft cockpit, removable
- Stainless steel plate on deck as protection for anchor chain with a cover of Delrin
- Outboard bracket with stainless steel protection, on pushpit, 1 pce
- Permanent seat on pushpit, both sides

## GRP MOULDINGS

- One coaming stripe, painted flag blue
- One storage locker in aft cockpit port coaming and storage for shower in starboard coaming
- Two hatches to lockers at main entrance
- Two lockers under aft cockpit seats for life raft stowage
- Two hatches in helmsman seat
- Shore power, TV and dock water intake with a hatch on starboard side in transom

## HATCHES AND WINDOWS

- Nautor made flush mounted hatches
- Flush mounted side window frames
- Two additional port lights in centre cockpit SB side at stn 7.2, Goiot 34.18
- One additional portlight at forward end of aft cockpit
- Side window hatches







## HEADS

### CREW CABIN TOILET:

- Mirror behind the toilet
- Electric toilet SFA auto electrical 24v with salt or fresh water options

### OWNER'S, GUEST CABINS AND CAPTAIN'S TOILET:

- Vacuflush system – all tanks replaced 2012.
- Drawers beside washbasins
- Corian Sierra Oceanic Blue horizontal areas with Glacier White basins
- Tiles for toilet compartments
- Seven small vertical handholds and one long towel rail of white plastic
- High mirrors in owners, captain's and aft guest cabin heads
- Small rubbish bin on back of locker door below sinks in all heads, (not in the crew's head)

### GENERAL

- Leather for saloon sofas, chairs and navigation seat and for sofa in aft cabin, new in 2008
- Slip or crew covers, floor covers in Sunbrella beige
- Curtains new 2011, with white back-up non transparent (like vinyl) cloth
- Roman blinds for saloon windows
- GRP boxes in the bilge for general stowage

- Lock with key for doors to owner's guest skipper's and crew quarter cabins
- Owner supplied glasses, cups and plates installed.
- Leeboards and lee clothes as required for all berths except pipe cots.
- Stainless steel bars in saloon holding books, DVD's etc..

### INTERIOR LAYOUT

#### FO'C'SLE

- TV
- Wooden berth on SB side with lockers and drawers below and additional "larder" removable stowage box
- Table convertible to double berth
- Watertight opening aft side of chain box in the bilge
- Fold-up upper berth on port side
- Mirror on toilet door facing crew cabin
- Lockers forward
- Chain box with lighting
- Boarding/bathing ladder on aft bulkhead

### GUEST CABINS

- FORWARD GUEST CABIN:
- Fixed lower double berth with drawers (2 pcs) and one lid
- Fold-up upper berth



- Hanging locker on SB-side forward
- Flat screen TV Installed above desk in a teak frame angled down

#### AFT GUEST CABIN:

- Fixed lower double berth with drawers below
- Fold-up upper berth
- Hanging locker
- Flat screen TV installed above desk in a teak frame and angled down with desk and drawers below

#### CAPTAIN'S CABIN:

- Insulation of aft bulkhead
- Upper berth of Pullman type
- Lower berth with 2 pcs of lids on the front
- Hanging locker with drawers below
- Safe, Chubb with combination lock,
- Passage door with a stopper in open position

#### PASSAGE:

- Washing machine and separate tumble dryer installed in passage locker

#### SALOON

- Dining table folds
- Saloon tabletop with inserted compass rose to sit up to 10 people
- Coffee table with built in bottle stowage

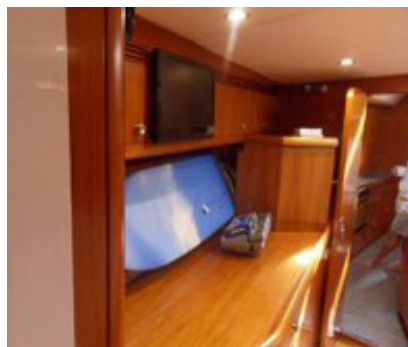
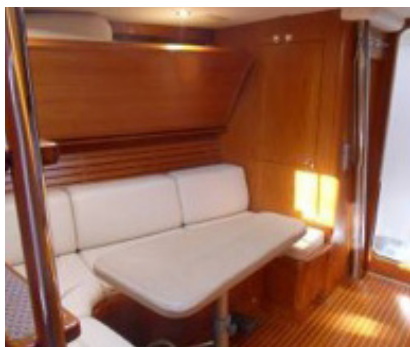
- Flatscreen TV behind SB saloon sofa. TV to be lifted electrically.
- Chairs instead of sofa wings on port side
- Frigonautica fridge (2008) to port of mast with glass locker above
- Starboard aft locker
- Hull windows surrounded by teak
- Shelf above sofa backrests, both sides
- Main entrance ladder with six steps.
- Possibility to lift the ladder for access to engine room.
- Polygrip anti grid material on the steps

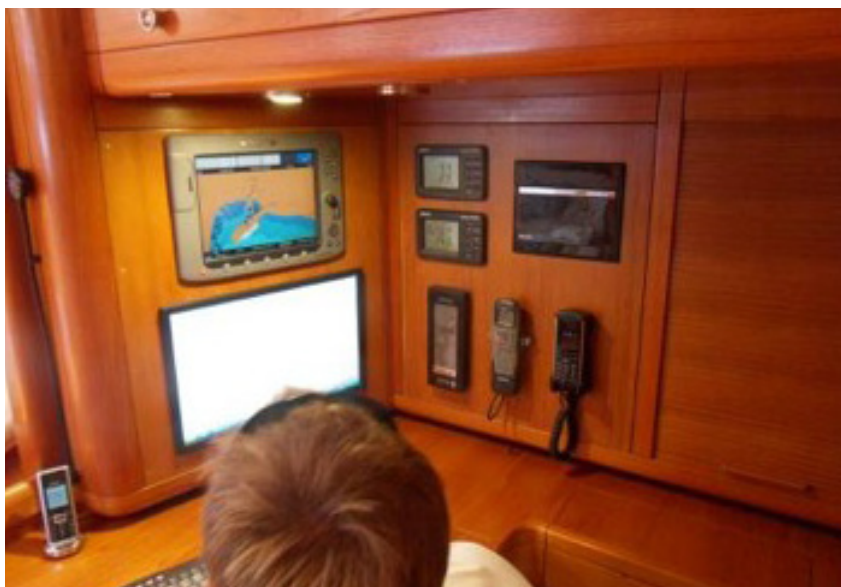
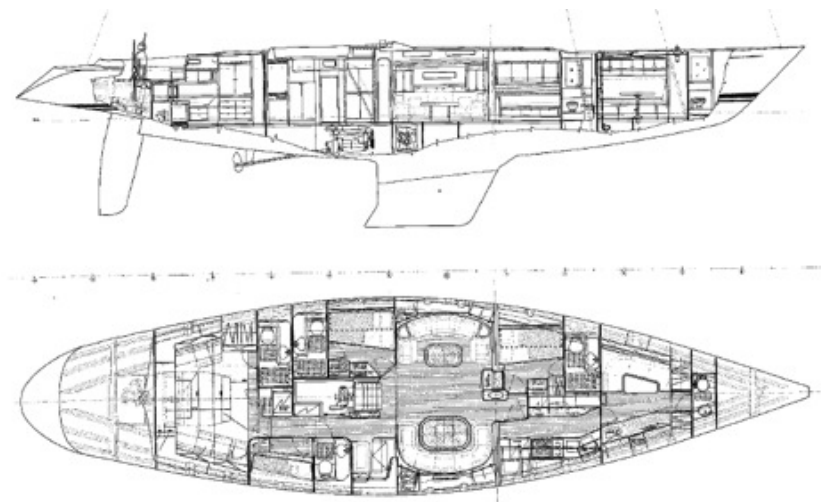
#### GALLEY

- Corian Sierra Oceanic blue working surfaces and sliding doors

#### STARBOARD SIDE:

- Small fridge/freezer in counter
- Recessed electric hot plate, ceramic installed with Corian cutting board over,
- Gas stove installed (Force 10) new in 2010
- Extractor hood
- Drawers under the hot plate
- Microwave with combi oven
- Quooker hot water boiler
- Frigonautica fridge and ice maker





## PORT SIDE:

- Locker forward
- Stainless steel sinks installed below Corian surface
- Pullout rubbish bin forward
- Freezer (240 l) below floorboards
- Additional GRP box aft of standard freezer
- Miele dishwasher

## NAVIGATION AREA

- Horizontal chart stowage

## OWNERS CABIN (AFT CABIN)

- Centreline double berth
- Custom stowage with lift up mattress under bed
- Hanging locker on port side with drawers below
- Lockers on port side
- Flatscreen TV on bracket
- Sofa on starboard and port sides with lockers above
- Hanging locker forward in the middle with shelves to SB.
- Mirrors on forward bulkhead and hanging locker door

## ENGINE

### MAIN ENGINE

- Main engine Perkins Sabre M225 Ti 165 kW, 2500 RPM with Hurth HSW 630 A reverse/reduction gear 2.52:1
- Shaft seal type PSS high speed 2/3"
- Flexible coupling Centaflex AM140
- Service battery 24 V 965 Ah, starting battery 24 V 135 Ah
- 3 x 6kg gas bottles

Service history available upon request

### FUEL

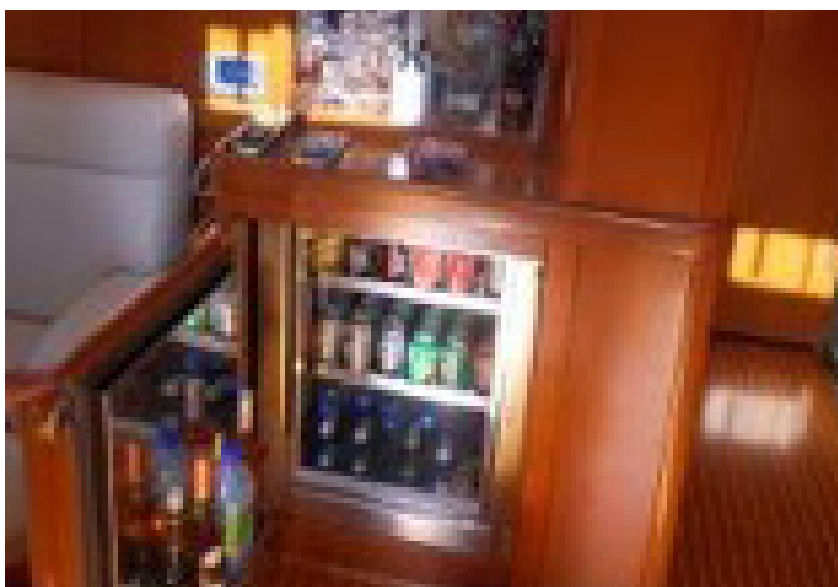
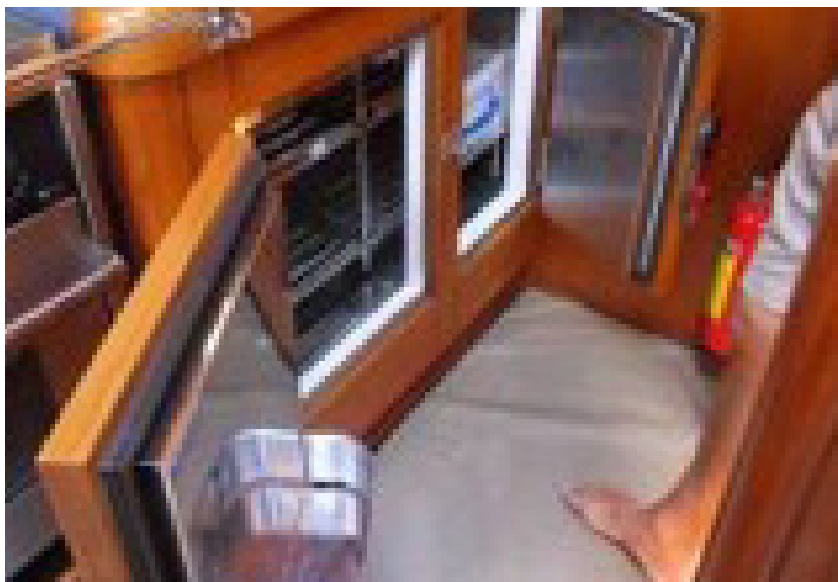
- Fuel capacity 1690 l in two tanks

### WATER

- Water 1370 ltr in 2 tanks Hot water 66 ltr
- Holding tank 167 ltrs in 2 tanks

### PROPULSION

- Three-bladed propeller type MaxProp Ø 800mm, 20° R
- Weed cutter, Ambassador Marine AM15-3



## PLUMBING AND VENTILATION

### GENERAL

#### TOILETS:

- Vacuum flushing toilets type Vaccuflush 1006 with connection to freshwater system
- Midships toilet SB side, discharge alternatively to stainless steel holding tank.
- Holding tank emptied by electrical Vaccuflush pump. Deck suction possibility (owner's head also connected to stand. day head tank)
- Recent maintenance valves fitted to allow holding tank servicing

### FRESHWATER SYSTEM

- Freshwater capacity 1390
- Tank monitor gauge in galley above stove
- Tank vent pipes end at galley sinks and additional vent for testing water maker product
- 2 x water heaters 1,2 kW
- Deck shower with permanent connected hose in aft cockpit SB-side
- Deck shower, hot and cold fresh water, at aft platform. The first step should stay open when showering.
- Drinking water purifier with outlet in galley
- City water connection through small transom hatch

- Watermaker, Seafresh H2012A, 4500 l/day, including standard spares kit and remote control
- New membranes 2008.

### DRAINAGE SYSTEM

- Three bilge pumps – two manual type Whale Gulper and one electrical submersible type Maxi Sub with automatic switch
- Additional electric bilge pump submersible type maxi Sub, with manual switch
- Auto stop with vacuum switch for sump tank pumps

### GALLEY EQUIPMENT

- Stove: Force 10 (4-burner + oven and grill)

### REFRIGERATION

- Standard Iceberg refrigeration unit with holdover plates for refrigeration and freezer, belted from main engine.
- Additional refrigeration unit, Iceberg, 230 V, 0,5 hp, 50/60 Hz
- Freezer under floorboards in galley
- Electric pump for fridge drainages
- Frigonautica fridge and Ice maker in galley
- Drinks fridge in saloon





## VENTILATION

### AIR CONDITIONING, MARINE AIR VCP 230V 50/60 HZ, TOTAL CAPACITY 53000 BTU:

- Aft cabin 12000 BTU, with connection to captain's cabin
- Saloon SB side 10000 BTU
- Saloon port side 10000 BTU
- Port aft guest cabin 7000 BTU
- Port forward guest cabin 7000 BTU
- Forecabin 7000 BTU with connection to galley

All air conditioning system apart from saloon replaced in 2010.

Forced ventilation

## ELECTRICAL

### DC SYSTEM

- Separate radio battery bank, 24 V 240 Ah/5 h rating, including 50 A battery charger
- Paralleling button for main engine starting batteries and service batteries
- Engine start batteries replaced in 2012 and all other batteries replaced in 2008

### POWER SOURCES

- Mass 24/1500 VA, 230 V, sine wave, including transfer switch, for TV, VCR and instruments

- Inverter, Mass 24/1500 VA, 115 V, sine wave, including transfer switch, for outlets in galley, at chart table, in owner's toilet and guest cabin toilets
- Inverter, Mass 24/5000 VA, 230 V, sine wave, including transfer switch, for microwave, icemaker and Quooker water boiler
- Diesel generator, Cummins Onan 220 volt 50 hz 17.5 kw, including sound shield and PTO (power take-off) with electric clutch for Lewmar Commander system

## ELECTRIC CONSUMERS

- Miele washer and dryer, in the passage locker
- Miele dishwasher in the galley
- Ceramic hob, 2 plates, Miele
- Galley extractor hood Alpes
- Fridge
- Panasonic combi Microwave oven
- Water boiler, Quooker, 800 W, 230 V
- Diving compressor, Bauer Junior, not fitted

## LIGHTS:

- Cabin light dimmer in owner's cabin (standard with 2 pcs in saloon)
- Lights beside mirrors in heads (except crew head)
- Additional red lights in crew cabin, galley and captain's cabin with separate switches at the chart table



- Reading bed lights and bulkhead lights (type Ragno)
- Automatic lights in all hanging lockers
- Boom light in aft end of boom
- Boom lights, 3 pcs, above centre cockpit
- LED spreader lights, recessed, on first spreaders, one each side and up lighters for mast
- Lights (dimmed) for the engine controls
- Lopo lights port and starboard and stern navigation lights

## PANELS AND CONTROLS

- Hydraulic emergency stop also to include windlass, fitted on the SB, under side of binnacle, in aft cockpit

## NAVIGATIONAL INSTRUMENTS

- Compass, Suunto 6"

## NAVIGATION INSTRUMENTS

- Hydra 2000 Wind/Depth/Log Pack, including transducers and two NMEA FFD at chart table
- Non-NMEA FFD, digital repeater aft cockpit
- 20/20 Large Digital Display, two aft side of coaming outside edges and two on mast and 3 more in companionway
- Wind direction indicator, 360°, and analogue
- Magnified wind direction indicator, 45°, analogue

## RADIOTELEPHONE, COMMUNICATION

- Mini-M, Fleet 250
- VHF Raymarine Ray240E outside
- Eriksson 3G Sim card router

## ENTERTAINMENT

### MASTER CABIN

- 22 inch Sony monitor 2012 with "Living Control" touch pad
- Loudspeakers Poly-Planar MA-905 roof-mounted and white, 2 pcs
- Amplifier with Ipod connector

### AFT GUEST CABIN

- Flatscreen monitor 15", Sharp LC-15M4E, LCD A/V monitor, no tuner included
- Loudspeakers Poly-Planar MA-905, 2 pcs
- Living Control touch pad

### MAIN SALOON

- Monitor 28", Sharp LC 28 HM2E without tuner, including pop-up system
- Remote control for pop-up system
- Loudspeakers Poly-Planar MA-905, 4 pcs
- Kaleidescape hard rive entertainment system fitted 2012 at a cost of circa GBP15,000



## FORWARD GUEST CABIN

- Flatscreen monitor 15", Sharp monitor,
- Loudspeakers Poly-Planar MA-905, 2 pcs
- Living Control touch pad and ipod connection

## CREW CABIN

- Sony LCD TV fitted 2011
- Loudspeakers Poly-Planar MA-905, 2 pcs
- Living Control touch pad and ipod connection

## GALLEY

- Loudspeakers Poly-Planar MA-905, 2 pcs. Connected to crew cabin radio/CD player
- Living Control touch pad and ipod connection

## FORWARD COCKPIT

- Loudspeakers in cockpit, Sony XS-MP- 61MKII, 2 pcs, connected to saloon stereo
- Living Control touch pad and ipod connection

## AFT COCKPIT

- Loudspeakers in aft cockpit, Sony XS-MP- 61MKII, 2 pcs,

## NAVIGATORS, RADAR, ETC.

- GPS Ray E120 at chart table
- Ray E80 at helm and crew mess
- AIS link

- Camera for engine room linked to chart table and helm
- Autopilot hydraulic Autohelm 7000 plus, 400G (E12092), instead of standard
- Autopilot remote control, ST 600 R, outlet in centre cockpit inside and under SB locker

## AERIALS

- Active antenna, DSC-Delta Pacific

## COMPUTER, PRINTER

- Wide screen ACER
- The Shuttle PC
- Intel (R) Core (TM) i3 CPU
- 550 @ 3.20GHz
- 3.20GHz, 2.99GB of Ram
- Wireless keyboard with HP printer/scanner

## RIG

- Offshore spars Carbon mast fitted in 2010 to original specifications

## MAST

- 4-spreader mast
- I = 31,0 m
- P = 28,4 m
- E = 9,1 m
- Harken switch T track system





- Mast steps
- Bracket on mast for two 20/20 repeaters
- Carbon spreaders

## STANDING RIGGING

- New 2010.
- Hydraulic furling headstay, Reckmann RF 90-3 R5, driven by Commander serviced 2011
- Stainless steel shroud and babystay rollers, Navtec type
- Aramid running backstays and check stays, new 2010.

## BOOM AND POLES

- Offshore spars Park Avenue main boom – 2010.
- Offshore spars carbon spinnaker pole 2010.

## HYDRAULIC SYSTEMS

- Backstay adjuster installed under deck
- Standard Navtec hydraulic System 50 panel mounted on steering pedestal for five functions, backstay, babystay, inner forestay, boomvang and outhaul. Two Navtec selector valves, one for inner forestay and baby stay and the other one for outhaul
- Navtec Quick release for boom vang, on port side of the binnacle
- Outhaul cylinder in boom, no winch
- Cylinder N-22 LE for genoa halyard



## RUNNING RIGGING

- Lazy jacks new 2010.
- Coloured Spectra running rigging, instead of standard

## SAILS

- North Sails
- FullBatten main including three reefs 2008 Spectra Carbon
- 120% furling genoa 2010 Carbon Spectra
- Heavy weather staysail 2003
- Trysail 2003
- 2012 Asymmetric spinnaker

## EQUIPMENT

### GENERAL

- Table for centre cockpit with possibility to lower the table. Holder for 2 champagne.
- Bottles and 4 glasses.
- Stainless steel bars in forward locker
- Leather on steering wheel

### ANCHORING AND MOORING

- Anchor chain, Lewmar 12 mm, grade 40, 100 meter
- Carbon fibre gangway, Multiplex, 3.2 m, to be stowed in forward stowage locker





## CANVAS WORK

- Cover for saloon tables
- Cover for cockpit table
- Sprayhood for main companionway with clear vision panels front and sides new 2012.
- Large aft cockpit sprayhood 2008
- Cushions for pushpit seats, 2008
- Cover for steering wheel 2008
- Cover for pedestal 2008
- Padded winch covers 2008
- Cushions for forward cockpit with backrest 2008.
- Cushions for aft cockpit without backrest 2008.
- Cushions for sundeck. 2008

## FIRE PREVENTION

- Fire extinguisher Softex system for engine and generator space with remote control at entrance
- Fire extinguisher, CO2, 2 kg, 2 pcs (3 pcs are standard)
- Fire extinguisher Powder, 1 kg, in all cabins and galley, additional fire blanket next to door
- All serviced 2013.

## SAFETY EQUIPMENT

- Hard weather safety lines on deck

## OTHERS

- Outboard engine, 60 hp, 2008
- Dinghy Avon 4.5m rib 2008

## BROKERS COMMENTS

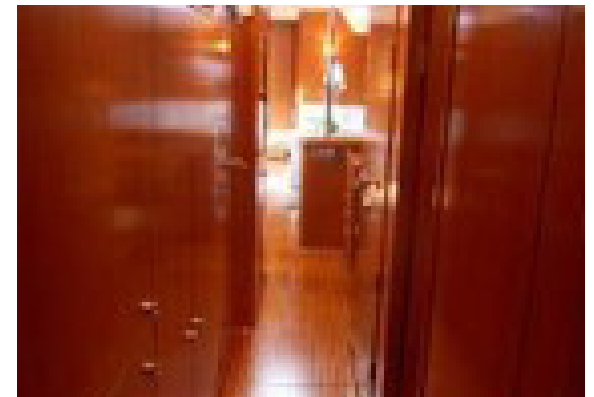
The Swan 77 was extended to 81 feet LOA at the factory and is designed by German Frers. The "77" represents a true cruising Swan with an amazing ability to both provide a platform for Regatta sailing if required and offer a true cruising Swan. She is of heavier displacement than her newer sisters but this model is still as popular as ever. Tugela boasts very high internal volume allowing for excellent stowage, sleeping and living accommodation. This example is the previous owner's second Swan 77/81 and she is optimised for simple, short-handed cruising.

Viewing is thoroughly recommended and she would also make a superb charter yacht for any owner looking to offset some of the running costs. Skipper maintained from new, this is a rare opportunity to purchase a more traditional and seaworthy Swan.

Location – Palma de Mallorca, Spain

## NOT INCLUDED IN SALE

Personal effects, including, personal tools, navigation equipment, cutlery, crockery, glassware, pictures and works of art.





**Hyde & Partners Limited** • UK Office • No. 8 Broadstone Place • London • W1U 7EP

**T:** +44 (0)207 0998 629 • **E:** [info@hydeyachts.com](mailto:info@hydeyachts.com) • [www.hydeyachts.com](http://www.hydeyachts.com)

*All particulars believed to be correct, but cannot be guaranteed.*